

**Features**

- Magnetically shielded, and SMD type.  
磁屏蔽构造, 贴片类型
- Connecting wire-less structure.  
无连接线结构
- High current, Low resistance.  
大电流, 低电阻
- Operating temperature : -40°C~+125°C.  
工作温度: -40°C~+125°C



**Applications**

- high efficiency DC/DC converters. 高效 DC/DC 转换器
- Single-phase, multi-phase buck converter. 单相、多相降压转换器
- Filter choke for motor electronics. 各类电机电子滤波扼流
- Laptops Graphic cards Motherboards Servers. 笔记本、显卡、主板、服务器等

**Electrical characteristics**

Part number 料号	Inductance 电感量 μH	DC resistance 直流电阻 mΩ		DC saturation current 直流饱和电流			Temperature rise current 温升电流	
				A typical			A. typical	
				10% drop	20% drop	30% drop	20°C rise	40°C rise
PUC107-101	0.10 ± 20%	0.16	0.145	>120	>120	>120	58	75
PUC107-121	0.12 ± 20%	0.16	0.145	95	>120	>120	58	75
PUC107-151	0.15 ± 20%	0.16	0.145	78	92	102	58	75
PUC107-181	0.18 ± 20%	0.16	0.145	68	75	78	58	75
PUC107-221	0.22 ± 20%	0.16	0.145	55	59	69	58	75
PUC107-331	0.33 ± 20%	0.16	0.145	35	40	47	58	75
PUC107-401	0.40 ± 20%	0.16	0.145	27	35	38	58	75

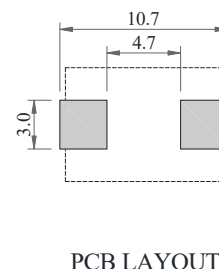
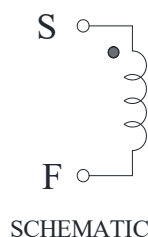
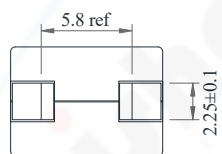
**Remark**

- Inductance is measured with a LCR meter Agilent 4284A or equivalent.  
Test frequency at 500kHz
- DC resistance is measured with 16502 Milliohm Meter or equivalent.  
Reference ambient temperature 25°C

**备注**

- 电感量测试采用 Agilent 4284A 数字电桥或同等仪器;  
测试频率 500KHz
- 直流电阻测试采用 16502 毫欧表或同等仪器;  
环境温度 25°C

**Dimensions**



**Electrical Characteristic Curve**

